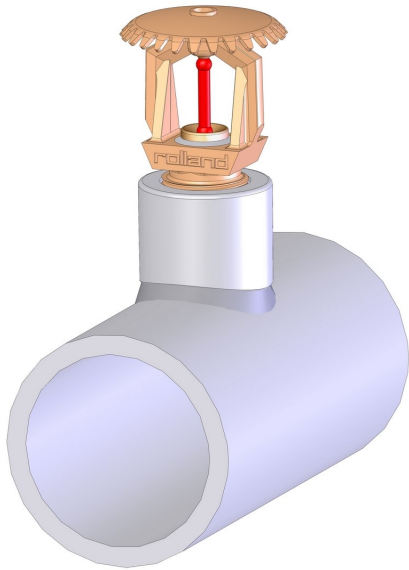
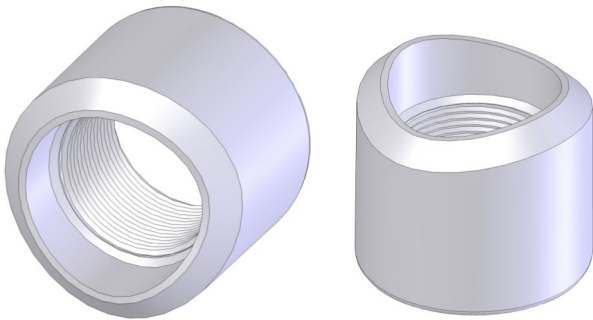


Welding branchlets for Sprinkler installations



TECHNICAL CHARACTERISTICS

Approved	FM / UL
Type	Chamfered profiled welding branchlets
Material	Mild steel ASTM A-106
Maximum working pressure	20 bar
Maximum test pressure	34.5 bar



Welding branchlets

Outlet	A mm	C mm	B Ø Pipe run size	Quantity / box
1/2" NPT	27,5	27	DN: 25/32/40/50/65/80/100	400
3/4" NPT	33,8	28,6	DN: 25/32/40/50/65/80/100	300
1" BSP	39,5	31,7	DN: 32/40/50/65/80/100/125/150	200
1"1/4 BSP	47,5	34,9	DN: 40/50/65/80/100/125/150	100
1"1/2 BSP	55	41,3	DN: 50/65/80/100/125/150	100

